

Pop Pinocchio

Harbour design 2017

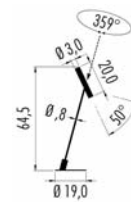
Lamp for interior lighting available in two versions: floor and table lamp. On the power supply cable, dimmer with "night light" function. The adjustable bulb is tiltable to 50° and rotatable to 359°, and allows to easy direction of light.

Lampada per interni disponibile nelle versioni da terra e tavolo; sul filo di alimentazione, dimmer con funzione "luce di cortesia". L'ottica è orientabile frontalmente fino a 50°, e lateralmente a 359°, permettendo di direzionare la luce in modo agevole.

Leuchte für Innen lieferbar in zwei Versionen: Steh und Tischleuchte; auf Netzkabel, Dimmer mit "Nachtlicht" - Funktion. Ausrichtbare Optik: 50° schwenkbar und 359° drehbar, um das Licht leicht auszurichten.

Lampe pour intérieur disponible en deux versions: lampadaire sur pied et lampe de table. Sur câble électrique, variateur avec fonction "veilleuse". Optique orientable : à 50° en face et à 359° latéralement, pour orienter la lumière aisément.

Lámpara para interior disponible en dos versiones: Lámpara de pie y lámpara de mesa. En el cable de alimentación, dimmer con función "luz de cortesia". La óptica es orientable frontalmente hasta 50°, y lateralmente 359°, lo que permite orientar la luz agilmente.



IP20 © MC-E=3 CE ▽
220-240V 6W CRI>85 dimmable

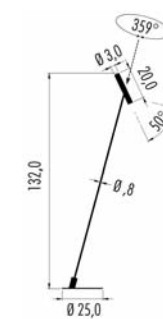
P50.2 ■ M. □

Led color	Nominal lm	Beam spread
2 = 2700 °K	824	M = 35°
3 = 3000 °K	861	
4 = 4000 °K	888	

□ Frame - Struttura

- 02 ● Black - Nero
- 06 ○ White - Bianco
- B ● Blue - Blu
- C ● Copper - Rame
- G ● Green - Verde
- P ● Rose - Rosa
- R ● Red - Rosso





IP20 © MC-E-3 CE ▽

220-240V 6W CRI>85 dimmable

P55.2 ■ M. □

Led color	Nominal lm	Beam spread
2 = 2700 °K	824	M = 35°
3 = 3000 °K	861	
4 = 4000 °K	888	

□ Frame - Struttura

02	●	Black - Nero
06	○	White - Bianco
B	●	Blue - Blu
C	●	Copper - Rame
G	●	Green - Verde
P	●	Rose - Rosa
R	●	Red - Rosso





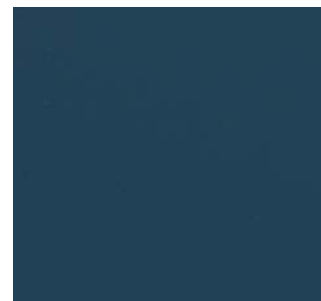
Red/Rosso



Rose/Rosa



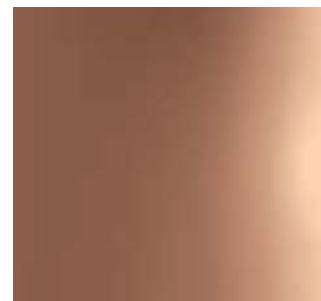
Green/Verde



Blue/Blu



Brass/Ottone



Copper/Rame

The colour rendering of these samples is approximate, not being possible to faithfully reproduce by offset printing.

I campioni colore sono solamente indicativi, non essendo possibile la riproduzione fedele a mezzo stampa offset.

Durch den Offset-Druck sind leichte Farbabweichungen der hier gezeigten Muster möglich.

Les échantillons de couleurs sont indicatifs, l'impression papier ne permettant pas une reproduction fidèle.

Las muestras de color son sólo indicativas, no siendo posible una reproducción fiel mediante impresión en papel.

Ⓐ Alimentatore incluso
control gear included
Vorschaltgerät mitgeliefert
platine d'alimentation fournie
alimentador incluido

Ⓒ Converter incluso
Converter included
Konverter mitgeliefert
Convertisseur fourni
Convertidor incluido

Ⓕ Lampadina inclusa
including bulb
Leuchtmittel inklusiv
ampoule comprise
bombilla incluida

Ⓓ Trasformatore incluso
transformer included
Trafo mitgeliefert
transformateur fournie
transformador incluido

Ⓐ Alimentatore non incluso
control gear not included
Vorschaltgerät nicht mitgeliefert
platine d'alimentation non fournie
alimentador excluido

Ⓒ Converter non incluso
Converter not included
Konverter nicht mitgeliefert
Convertisseur non fourni
Convertidor excluido

Ⓕ Lampadina non inclusa
Bulb not included
Leuchtmittel nicht mitgeliefert
Ampoule non fourni
Bombilla excluida

Ⓓ Trasformatore non incluso
transformer not included
Trafo nicht mitgeliefert
transformateur non fournie
transformador excluido

IP identification

IP2X protezione contro corpi estranei ≥ 12mm
protection against solid objects ≥ 12mm
Schutz gegen Fremdkörpern ≥ 12 mm
protection contre des corps étrangers ≥ 12mm
protegido contra objetos extraños ≥ 12mm

IP4X protection against solid objects ≥ 1mm
protezione contro corpi estranei ≥ 1mm
Schutz gegen Fremdkörpern ≥ 1mm
protection contre des corps étrangers ≥ 1mm
protegido contra objetos extraños ≥ 1mm

IPX0 nessuna protezione
no protection
kein Schutz
non protégé
sin protección

“Creativity is inventing, experimenting, growing, taking risks, breaking rules, making mistakes, and having fun.”

Mary L. Cook